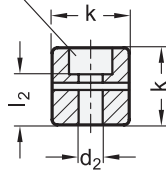
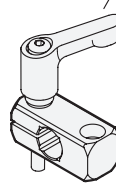


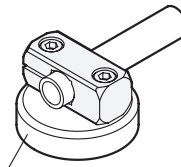
Countersunk for socket cap screw DIN 912



Adjustable lever kit GN 511



Application example




Retaining magnet GN 51.6



Metric table



Dimensions in: millimeters - inches

d ₁ Bore for shaft tolerance h11	d ₂ For screw	k	l ₁	l ₂	m	s Square	Adjustable lever kit for d ₂ 
B 8	M 4	14 0.55	31.5 1.24	10 0.39	22 0.87	-	GN 511-M4-20
B 10	M 5	16 0.63	38 1.50	10.5 0.41	27 1.06	8 0.31	GN 511-M5-25
B 12	M 5	16 0.63	38 1.50	10.5 0.41	27 1.06	10 0.39	GN 511-M5-25
B 15	M 6	20 0.79	45 1.77	14 0.55	32 1.26	12 0.47	GN 511-M6-25
B 16	M 6	20 0.79	45 1.77	14 0.55	32 1.26	-	GN 511-M6-25
B 20	M 6	25 0.98	50 1.97	19 0.75	36 1.42	16 0.63	GN 511-M6-32

Specification



- Aluminum
 - Matte, tumbled finish **MT**
 - Black anodized finish **ELS**
- ISO Fundamental Tolerances → page 2129
- RoHS compliant

Accessory

- Adjustable lever kits GN 511 → page 1829

Information

GN 477 mounting clamps do not have a thread. Mounting or clamping is made by two threads on the attachment side.

The bore distance m corresponds to GN 473 base plate mounting clamps, GN 485 base plate swivel mounting clamps, and GN 480 flanged mounting bolts as well as GN 51.6 retaining magnets.

see also...

- Product Family Standard Parts for Profile Systems → page 18
- Rods / Tubes GN 480.1 → page 1838
- Flanged Connector Clamps GN 145 → page 1778
- T-Nut Assemblies GN 965 (for 30 / 40 mm T-Slot Profile Systems) → page 2048
- T-Nut Assemblies GN 968 (for 30 / 40 / 45 mm T-Slot Profile Systems) → page 2058

<p>How to order</p> <p>GN 477-B12-MT</p>	1	Bore d ₁
	2	Finish