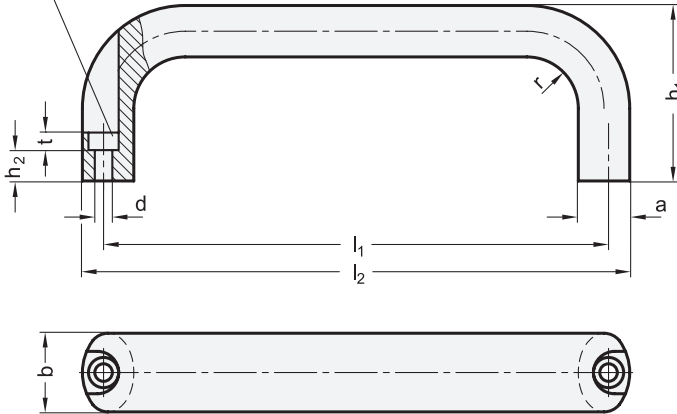


Bore for socket cap screw
#10 / 1/4" or ISO 4762-M5 / M6



Universal



Universal table

Dimensions in: millimeters / inches

b	l₁	a	d	h₁	h₂	l₂	r	t
20 0.79	100 3.94	13 0.51	5.4 0.21	49 1.93	13.5 0.53	112 4.41	13 0.51	5.5 0.22
20 0.79	112 4.41	13 0.51	5.4 0.21	49 1.93	13.5 0.53	124 4.88	13 0.51	5.5 0.22
20 0.79	117 4.61	13 0.51	5.4 0.21	49 1.93	13.5 0.53	129 5.08	13 0.51	5.5 0.22
20 0.79	120 4.72	13 0.51	5.4 0.21	51 2.01	13.5 0.53	132 5.20	13 0.51	5.5 0.22
20 0.79	128 5.04	13 0.51	5.4 0.21	51 2.01	13.5 0.53	140 5.51	13 0.51	5.5 0.22
20 0.79	160 6.30	13 0.51	5.4 0.21	51 2.01	13.5 0.53	172 6.77	13 0.51	5.5 0.22
26 1.02	116 4.57	17 0.67	6.4 0.25	55 2.17	11 0.43	130 5.12	17 0.67	6 0.24
26 1.02	120 4.72	17 0.67	6.4 0.25	55 2.17	11 0.43	134 5.28	17 0.67	6 0.24
26 1.02	132 5.20	17 0.67	6.4 0.25	55 2.17	11 0.43	146 5.75	17 0.67	6 0.24
26 1.02	164 6.46	17 0.67	6.4 0.25	57 2.24	11 0.43	178 7.01	17 0.67	6 0.24
26 1.02	179 7.05	17 0.67	6.4 0.25	57 2.24	11 0.43	193 7.60	17 0.67	6 0.24
26 1.02	196 7.72	17 0.67	6.4 0.25	57 2.24	11 0.43	210 8.27	17 0.67	6 0.24

Specification

Aluminum

- Powder coated, textured finish
 - Black, RAL 9005, UV resistant
 - Red, RAL 3000
 - Silver, RAL 9006
- Anodized finish, natural color
- Plain, tumbled finish

- **SW**
- **RS**
- **SR**
- **EL**
- **BL**

RoHS

On request

- Various metric and inch size fasteners and kit packaging

Cabinet U-handles GN 565.1 are manufactured from a bent aluminum profile and have excellent stability and ergonomic design.

In addition to the standard finishes, these cabinet U-handles are also available with a functional coating:

The **SW** version is coated with a highly weather-resistant and UV-resistant powder coating system, making this version excellent for outdoor use.

Technical Information

Product Family Standard Parts for Profile Systems

QVX

Load Capacity Information

QVX

How to order	
1	Handle width b
2	Length l₁
3	Finish
GN 565.1-26-132-SW	

1.1
1.2
1.3
1.4
2.1
2.2
2.3
2.4

