

Type W



Figure sequence L



Figure sequence M

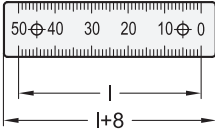
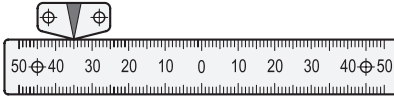


Figure sequence R

Application example



Type S

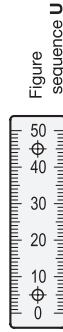


Figure sequence U

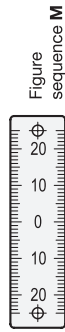


Figure sequence M

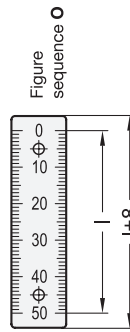
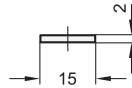


Figure sequence O



Metric



3 Type

W Figures horizontally arranged (Figure sequences L, M, R)

S Figures vertically arranged (Figure sequences U, M, O)

5 Identification no.

1 With mounting holes Ø 3.3 mm

Metric table

2 Dimensions in: millimeters / inches

Length l (Scale)	Number of bores	Figure sequence M							Figure sequence L / R / U / O						
		a ₁ ±0.1	a ₂ ±0.1	a ₃ ±0.1	a ₄ ±0.1	a ₅ ±0.1	a ₆ ±0.1	a ₇ ±0.1	a ₁ ±0.1	a ₂ ±0.1	a ₃ ±0.1	a ₄ ±0.1	a ₅ ±0.1	a ₆ ±0.1	a ₇ ±0.1
50 1.97	2 0.08	4 0.157	-	-	-	-	-	4 0.157	-	-	-	-	-	-	-
100 3.94	2 0.08	9 0.354	-	-	-	-	-	9 0.354	-	-	-	-	-	-	-
150 5.91	2 0.08	4 0.157	-	-	-	-	-	4 0.157	-	-	-	-	-	-	-
200 7.87	3 0.12	9 0.354	99 3.898	-	-	-	-	9 0.354	99 3.898	-	-	-	-	-	-
300 11.81	3 0.12	9 0.354	149 5.866	-	-	-	-	9 0.354	149 5.866	-	-	-	-	-	-
400 15.75	4 0.16	9 0.354	139 5.472	269 10.591	-	-	-	9 0.354	139 5.472	269 10.591	-	-	-	-	-
500 19.69	4 0.16	9 0.354	169 6.654	339 13.346	-	-	-	9 0.354	169 6.654	339 13.346	-	-	-	-	-
750* 29.53	8 0.31	4 0.157	124 4.882	254 10.000	374 14.724	394 15.512	504 19.843	634 24.961	4 0.157	129 5.079	249 9.803	369 14.528	389 15.315	509 20.039	629 24.764
1000* 39.37	8 0.31	9 0.354	169 6.654	339 13.346	499 19.646	519 20.433	679 26.732	839 33.031	9 0.354	169 6.654	329 12.953	499 19.646	519 20.433	679 26.732	839 33.031

* These lengths consist of 2 parts.

Specification

Aluminum

- Anodized finish, natural color
- Black imprinted
- Surface with numbers and scale markings etched (i.e., aluminum colored)
- Imprint resistant to weak acids and lye solutions, and against solvents in the event of brief contact

RoHS

On request

- Self-adhesive version

Accessory

GN 711.3 Indicator Arrows



AL

QVX

The position of linear actuator connectors can be easily read from rulers GN 711.2. The black background creates a high contrast to the natural-colored numbers and scales, and prevents glare. The orientation of the dimensioning of the fastening holes depends on the sequence of the numbers and is shown in the drawing.

see also...

GN 711 Rulers (Stainless Steel / Plastic, with Self-Adhesive Backing)

Page

QVX

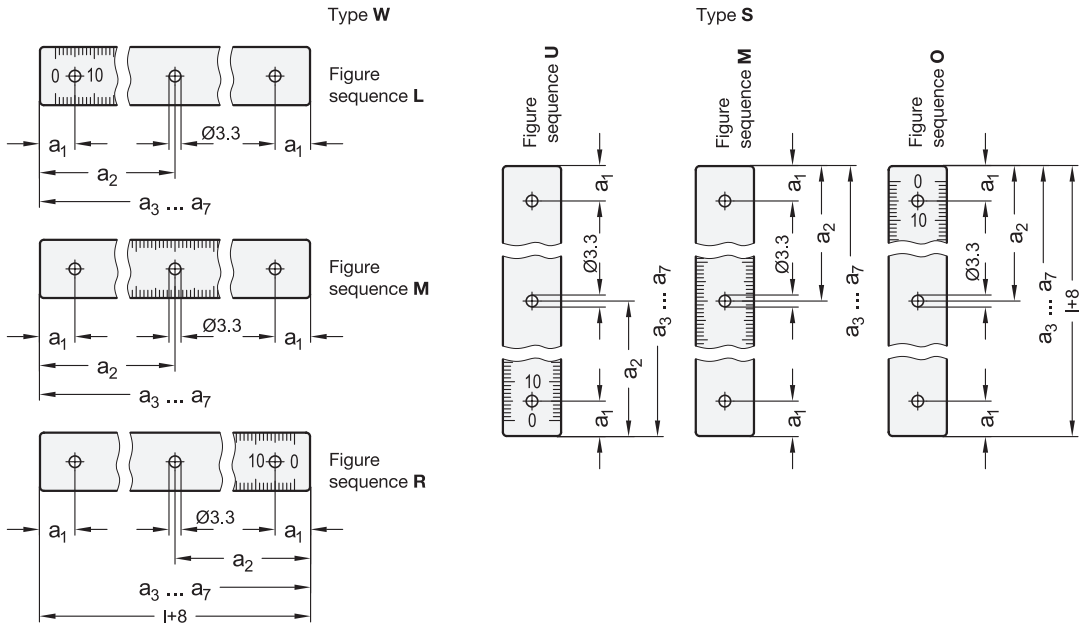
How to order

1	Material
2	Length l (Scale)
3	Type
4	Figure sequence
5	Identification no.

GN 711.2-AL-100-W-L-1



Mounting Holes

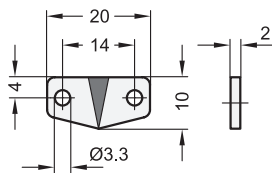


GN 711.3

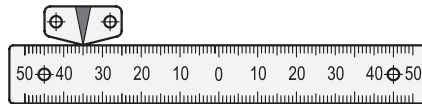
Indicator Arrows

Aluminum, with Mounting Holes, for use with Rulers

Metric



Application example



2 Identification no.

- 1 With mounting holes Ø 3.3 mm

Specification

Aluminum

- Anodized finish, natural color
- Black imprint
- Zero point mark etched, i.e. aluminum-colored
- Imprint resistant to weak acids and lye solutions, and against solvents in the event of brief contact

RoHS

On request

- Self-adhesive version

1
AL

With the indicator arrow GN 711.3, reference points can be marked on rulers or reference positions in machines.

see also...

GN 711.1 Indicator Arrows (Plastic / Stainless Steel, Self-Adhesive)

Page

QVX

How to order

GN 711.3-AL-1

- | | |
|---|--------------------|
| 1 | Material |
| 2 | Identification no. |