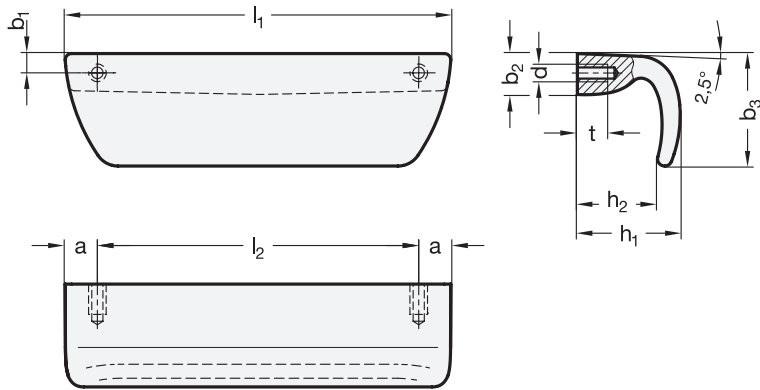


1.1
1.2
1.3
1.4
2.1
2.2
2.3
2.4

Metric



SS Stainless Steel

Metric table

2

Dimensions in: millimeters / inches

l_1	a	b_1	b_2	b_3	d	h_1	h_2	l_2	t min.
120 4.72	10 0.39	6 0.24	12.5 0.49	35 1.38	M 6	32 1.26	25 0.98	100 3.94	9 0.35

Specification

1

3

Stainless steel
precision casting AISI 316
Matte shot-blasted finish

A4

GS

RoHS

On request

- Polished or powder coated version
- Various metric size fasteners and kit packaging

The ledge handle GN 730.5 is used on doors, guards and hatches on machines, as well as on drawers and pull-out units. Due to the A4 material used, the handle is intended especially for use in corrosive environments with aggressive media.

The ledge handle is made in a way that does not allow pooling of fluids, which makes cleaning easier and prevents build-up of residue and bacteria. It is attached from the back side via the mounting threads. Alternatively, the handle can be welded from the front.

see also...

Page

GN 730 Ledge Handles (Aluminum)

QVX

GN 430 | GN 430.1 Ledge Handles (Aluminum)

QVX

Technical Information

Stainless Steel Characteristics

QVX

How to order

GN 730.5-A4-120-GS

- Material
- Length l_1
- Finish